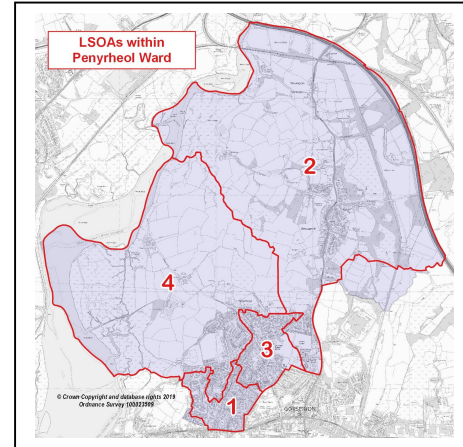


WIMD 2019 Local Summary: LSOAs in Penyrheol Ward

Overall index and individual domain rankings for Lower Super Output Areas (LSOAs) in the Ward

WIMD 2019		Overall Index Rank		Wales Decile
Rank	LSOA Name	Swansea	Wales	
1	Penyrheol 4	28	305	2
2	Penyrheol 1	64	842	5
3	Penyrheol 2	91	1388	8
4	Penyrheol 3	92	1405	8



Note: Swansea LSOAs ranked 1-148 (most to least deprived) / **Wales LSOAs ranked 1-1909**. Wales decile groupings (1-10) each include roughly 191 LSOAs.

Domain:	Income		Employment		Health		Education	
LSOA	Swansea	Wales	Swansea	Wales	Swansea	Wales	Swansea	Wales
Penyrheol 1	55	671	58	695	47	581	59	792
Penyrheol 2	92	1238	101	1307	77	952	72	990
Penyrheol 3	80	1074	88	1157	72	865	82	1197
Penyrheol 4	32	285	22	162	20	206	38	487

Domain:	Access to Services		Housing		Community Safety		Phys. Environment	
LSOA	Swansea	Wales	Swansea	Wales	Swansea	Wales	Swansea	Wales
Penyrheol 1	67	1036	74	1146	100	1354	81	1281
Penyrheol 2	54	900	90	1287	114	1543	121	1641
Penyrheol 3	116	1597	100	1466	93	1257	125	1679
Penyrheol 4	36	683	59	929	95	1267	132	1712

Source: Welsh Index of Multiple Deprivation (WIMD) 2019, Welsh Government, published 27 November 2019.

Notes:

- The Welsh Index of Multiple Deprivation 2019 (WIMD 2019) is the official measure of relative deprivation for small areas in Wales.
- Each domain is based on a range of different indicators, which are weighted and combined to provide domain scores and rankings and the overall index of multiple deprivation. Income and Employment each account for 22% of the total Index score, Health 15%, Education 14%, Access to Services 10%, Housing 7%, and Physical Environment and Community Safety 5% each.
- Further local information on WIMD is available on the Council's website: www.swansea.gov.uk/wimd2019 or www.swansea.gov.uk/deprivation
- The Welsh Government's WIMD pages (including further reports, data and guidance): www.gov.wales/welsh-index-multiple-deprivation

For further information and data from WIMD 2019, please contact:

Swansea Council - Information, Research and GIS
Tel: 07970 610583. E-mail: research@swansea.gov.uk

Strategic Delivery Unit, Resources Directorate, Civic Centre, Swansea, SA1 3SN.

