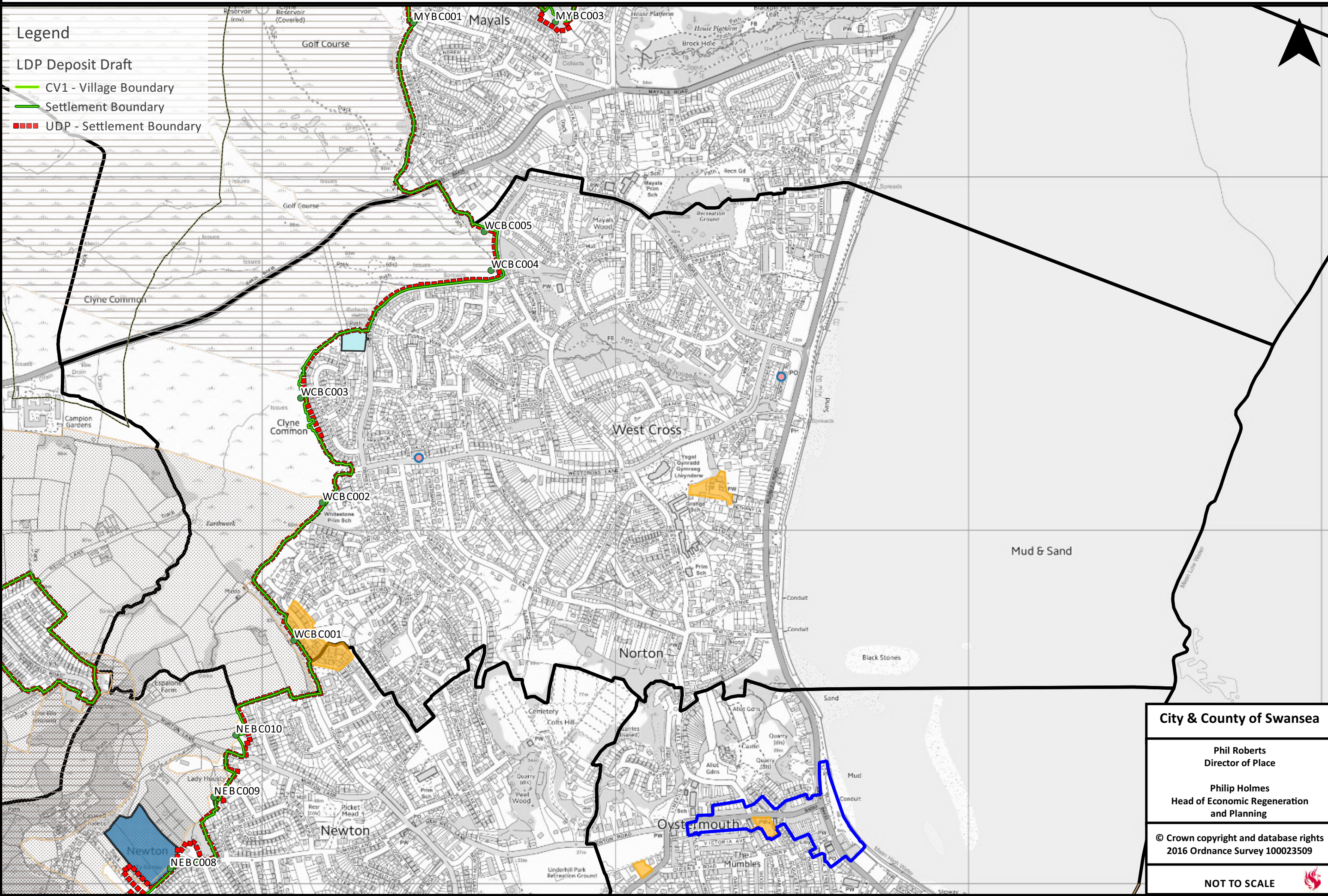



LDP Deposit Proposals Map - Settlement Boundary Review - West Cross ED

- Legend**
- LDP Deposit Draft
 - CV1 - Village Boundary
 - Settlement Boundary
 - UDP - Settlement Boundary



City & County of Swansea
Phil Roberts Director of Place
Philip Holmes Head of Economic Regeneration and Planning
© Crown copyright and database rights 2016 Ordnance Survey 100023509
NOT TO SCALE 

Settlement Boundary Review Summary Form

WARD	West Cross	<p>Consultation Map http://swansea.jdi-consult.net/documents/pdfs257/Draft%20Proposals%20Map%20-%20WestCross4.pdf</p> <p>Representations received http://swansea.jdi-consult.net/ldp/viewreps.php?docelemid=39672&docid=257</p>
-------------	-------------------	---

Summary of Settlement Boundary Changes Recommended for West Cross

Change Ref	Reason Ref	Description
WCBC001	M1	Minor adjustments of boundary to follow the rear boundaries of 31 – 41 Moorland Avenue (odd only)
WCBC002	M2	Minor correction of boundary at Whitestone Primary School to accurately follow the base map
***** WCBC003 *****	M1	Realign boundary to accurately follow the rear boundaries of the properties fronting onto Westland Avenue
***** WCBC004 *****	M2	Realign boundary to run along the outer edge of Chestnut Avenue and Mulberry Avenue up to Nos.28
WCBC005	M1	Amend boundary to follow the southern boundary of 28 Mulberry Avenue.

Response to representations made in relation to Pre-Deposit Proposals Map settlement boundary.

Representation Summary	Response
Suggested boundary amendment north of Higherpool Lane to incorporate three parcels of greenfield land within the settlement to allow for housing development.	The housing need in this area should be met through the allocation of preferential sites. Currently the strip of common land represents a strong settlement boundary and should be maintained. No change to boundary.