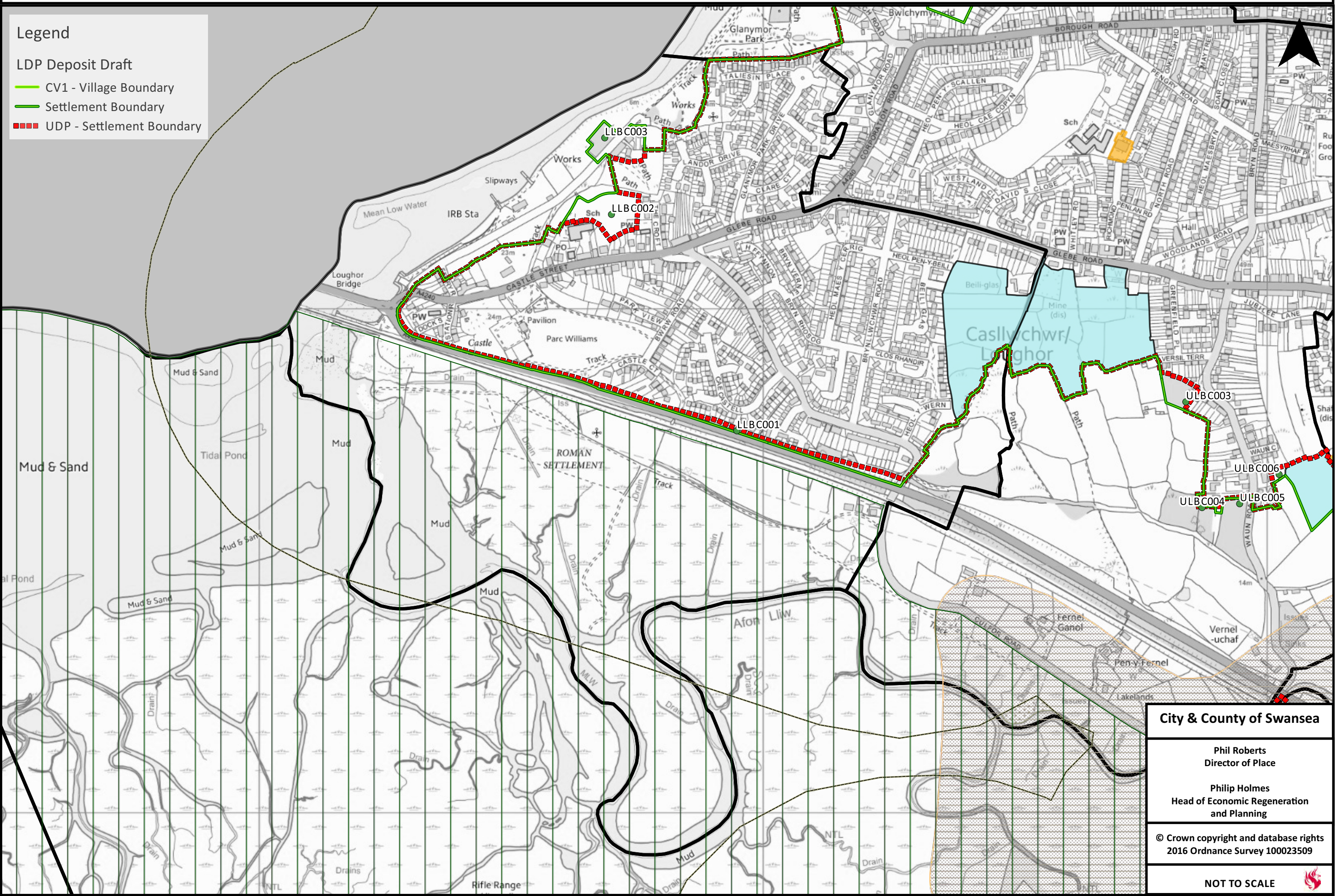


# LDP Deposit Proposals Map - Settlement Boundary Review - Lower Loughor ED

**Legend**

- LDP Deposit Draft
- CV1 - Village Boundary
- Settlement Boundary
- UDP - Settlement Boundary



**City & County of Swansea**

Phil Roberts  
Director of Place

Philip Holmes  
Head of Economic Regeneration  
and Planning

© Crown copyright and database rights  
2016 Ordnance Survey 100023509

NOT TO SCALE



## Settlement Boundary Review Summary Form

<b>WARD</b>	<b>Lower Loughor</b>	<p><b>Consultation Map</b>  <a href="http://swansea.jdi-consult.net/documents/pdfs257/Draft%20Proposals%20Map%20-%20LowerLoughor4.pdf">http://swansea.jdi-consult.net/documents/pdfs257/Draft%20Proposals%20Map%20-%20LowerLoughor4.pdf</a></p> <p><b>Representations received</b>            none</p>
-------------	----------------------	--

### Summary of Settlement Boundary Changes Recommended for Lower Loughor.

Change Ref	Reason Ref	Description
LLBC001	M1	Amend boundary to run along the northern edge of the A484 Llanelli to Swansea bypass.
LLBC002	S1	Amend boundary to include Casllwchwr Primary School playing fields.
LLBC003	S6	Amend boundary to incorporate Loughor foundry and the adjacent terrace of dwellings on Gwydr Place

### Response to representations made in relation to Pre-Deposit Proposals Map settlement boundary.

No representations made